

# 6<sup>th</sup> Grade Summer Reading

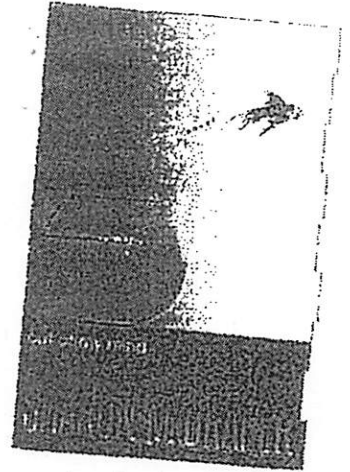
Madison Middle 2022-2023

## *Out of My Mind* by Sharon M. Draper

(May be available at Barnes & Noble or Amazon)

Dear Upcoming 6<sup>th</sup> Graders and Parents:

We have chosen one required reading book, *Out of My Mind* by Sharon M. Draper, for our upcoming sixth graders in English Language Arts. This book is on Madison County's approved book list with caveat that uses the word retarded. We will discuss how words and actions can impact each other, and why it's important to be kind. All students should complete the activity prior to the beginning of 6<sup>th</sup> Grade. This will be turned in the first full week school starts back. Students should also be prepared to participate in a class discussion about *Out of My Mind*. We encourage students to read and complete the activity throughout the summer rather than waiting until the week prior to school. The assignment is designed to ease the transition from 5<sup>th</sup> grade to 6<sup>th</sup> grade and to practice writing skills.



If you loved the book *Out of My Mind*, you would enjoy the sequel *Out of My Heart*. *Out of My Heart* is not a requirement.

Parents, please encourage your child to make reading a part of his or her daily activity this summer. We appreciate the efforts you make to foster a love of reading.



Sincerely,  
6<sup>th</sup> Grade English Language Arts Teachers

## *Out of My Mind* Activity

Please see the attached chart to fill out over the summer reading book. Be sure to write in complete sentences and pay attention to capitalization and punctuation.

**Due Thursday, August 11, 2022.**

# 6<sup>th</sup> Grade Summer Reading Notes

*Out of My Mind* by Sharon M. Draper

Due Thursday, August 11, 2022

Name \_\_\_\_\_

## SETTING:

Time (past, present, future)	
Place	

**CHARACTER DESCRIPTION & GROWTH:** As you read, take notes about the main characters.

Main Character (Protagonist): \_\_\_\_\_

<b>Physical description:</b> (Ex: What does she look like? How does she dress?)	
<b>Character traits:</b> (What do you know about her personality?)	
<b>Character relationships or interactions with others:</b> (friends, family, helpers, teachers, enemies, etc.)	
How does the character change, grow, learn lessons?	
Other important things you noticed:	

**Opposing Character (Antagonist):** \_\_\_\_\_ (Who causes the most problems for the main character?)

<b>Physical description:</b> (Ex: What does he/she look like? How does he/she dress?)	
<b>Character traits:</b> (What do you know about his/her personality?)	
<b>Character relationships or interactions with others:</b> (friends, family, helpers, teachers, enemies, etc.)	
How does the character change, grow, learn lessons?	

**CONFLICT/RESOLUTION:** Take notes about the **conflicts or problems** the main character faces.  
 How are these problems resolved?

Problem(s)	
Solution(s)	

**THEME:** Take notes about the message or lesson about life the author wants the reader to learn from the characters.

What is a theme (message/lesson) of the story?	
What did the characters do to show the reader this lesson?	

# Madison Middle School

## 6<sup>th</sup> Grade Supply List

### 2022-2023

#### **Required supplies: Turn in to your homeroom teacher.**

- 6<sup>th</sup> Grade School Supply Fee of \$40 – this fee needs to be paid online through My School Bucks.
- 1 box of Kleenex
- 2 rolls of paper towels
- 2 containers of Clorox Wipes
- Boys –1 box of gallon size Ziploc bags
- Girls –1 package of Expo markers
- 1 bottle of hand sanitizer

#### **Required Supplies: Keep in your backpack at ALL times.**

- 3 three-ring binders (some can be shared – ask your teachers)
  - Social Studies
  - Science
  - Language Arts
  - Math
  - Cyper Foundations
  - Art
- 4 packs of dividers with pockets (5 per pack)
- Highlighters
- Wooden Pencils
  - Hand-held pencil sharpener
  - Cap erasers
- Mechanical Pencils with extra lead
- Colored Pencils
- Ear buds or headphones (bring EVERYDAY)
- Basic 4-function calculator for Math (No scientific calculators)

#### **Subject Area Required Supplies: Turn in to the following teachers:**

- Science
  - Colored pencils with erasers
- Social Studies
  - Colored pencils with erasers
  - Skinny Markers
- Art
  - Art Fee of \$20 per art student – this fee needs to be paid on My School Bucks.
- Pathways
  - Supply list will be given the first week of school

#### **Optional Items:**

- Pencil bag with rings to store pencils, highlighters, etc.
- Reinforcement labels (circles) for torn paper