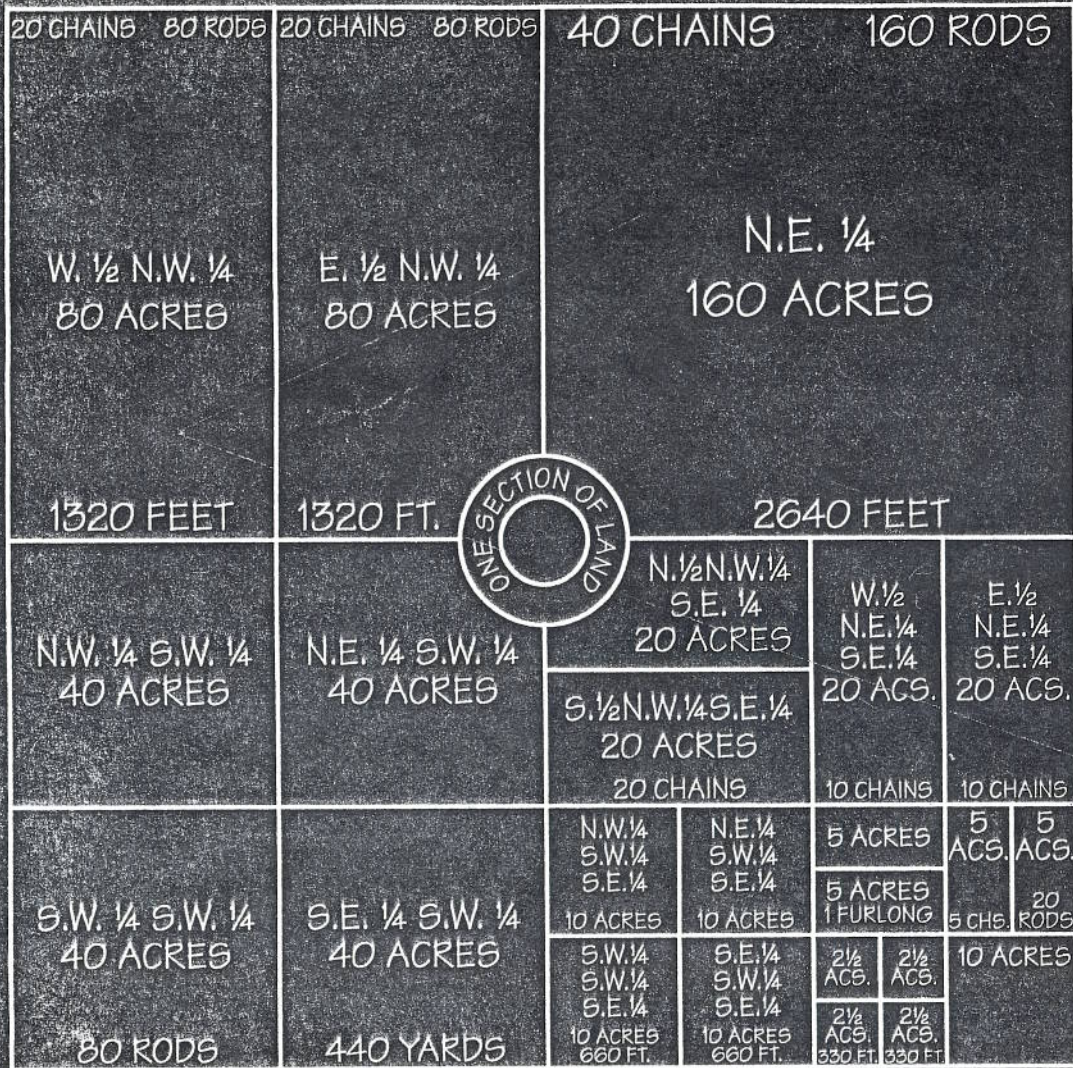


ONE SECTION OF LAND CONTAINS ONE SQUARE MILE OR 640 ACRES.



1 LINK = 7.92 INCHES

1 ROD = 16 1/2 FEET

5 1/2 YARDS = 25 LINKS

1 CHAIN = 66 FEET = 4 RODS = 100 LINKS

1 FURLONG = 660 FEET = 40 RODS

1 MILE = 8 FURLONGS = 320 RODS = 80 CHAINS = 5280 FEET

1 SQUARE ROD = 272 1/4 SQUARE FEET = 30 1/4 SQUARE YARDS

1 ACRE = 43,560 SQUARE FEET

1 ACRE = 160 SQUARE RODS

1 ACRE IS APPROXIMATELY 208 3/4 FEET SQUARE

1 ACRE IS 8 RODS x 20 RODS

(Or any two numbers of rods whose product is 160)