

U.S. DEPARTMENT OF THE INTERIOR
BUREAU OF LAND MANAGEMENT

LAND DESCRIPTION DIAGRAM

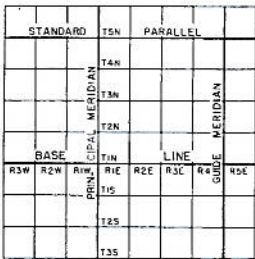
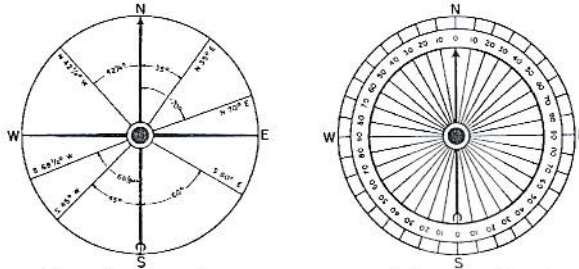


Diagram showing division of tract into Townships



60 seconds equal one minute
60 minutes equal one degree

90 degrees in a right angle
360 degrees in a circle

36	31	32	33	34	35	36	31
1	6	5	4	3	2	1	6
12	7	8	9	10	11	12	7
13	18	17	16	15	14	13	18
24	19	20	21	22	23	24	19
25	30	29	28	27	26	25	30
36	31	32	33	34	35	36	31
1	6	5	4	3	2	1	6

Sectional map of Township showing adjoining Sections

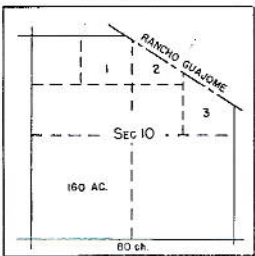


Diagram illustrating division of Fractional Section into Government Lots

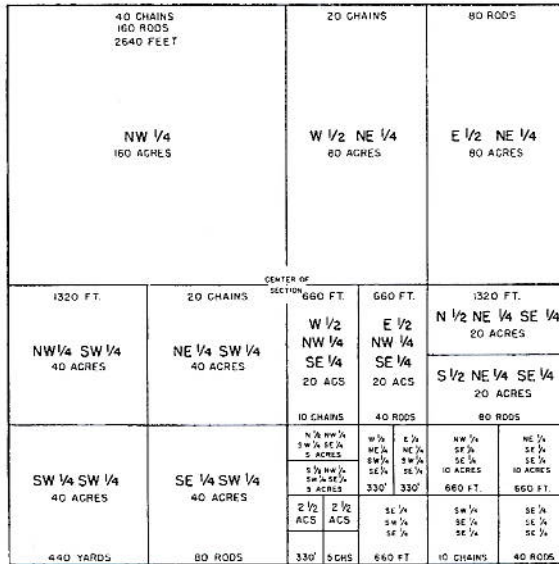


Table of Land Measurements

LINEAR MEASURE

1 inch =	.0833 ft.
7.92 inches =	1 link
12 inches =	1 foot
1 vara =	33 inches
2 3/4 feet =	1 vara
3 feet =	1 yard
25 links =	16 1/2 feet
25 links =	1 rod
100 links =	1 chain
16 1/2 feet =	1 rod
5 1/2 yards =	1 rod
4 rods =	100 links
66 feet =	1 chain
80 chains =	1 mile
320 rods =	1 mile
8000 links =	1 mile
5280 feet =	1 mile
1760 yards =	1 mile

SQUARE MEASURE

144 sq. in. =	1 sq. foot
9 sq. feet =	1 sq. yard
30 1/2 sq. yds. =	1 sq. rod
16 sq. rods =	1 sq. chain
1 sq. rod =	272 1/4 sq. ft.
1 sq. ch. =	4356 sq. ft.
10 sq. chs. =	1 acre
160 sq. rods =	1 acre
4840 sq. yds. =	1 acre
43560 sq. ft. =	1 acre
640 acres =	1 sq. mile
100 links =	1 section
36 sq. miles =	1 Twp.
6 miles sq. =	1 Twp.
1 sq. mi. =	2.59 sq. kilm

An Acre is:

43,560 sq. feet.	660 feet x 66 feet.
165 feet x 264 feet.	160 square rods.
198 feet x 220 feet.	208' 8" square.

or any rectangular tract, the product of the length and width of which totals 43,560 sq. ft.